



**REGIONAL SPECIALISED METEOROLOGICAL CENTRE-TROPICAL CYCLONES, NEW DELHI  
TROPICAL WEATHER OUTLOOK**

---

**DEMS-RSMC SPECIAL TROPICAL CYCLONES NEW DELHI DATED 23.03.2022**

**SPECIAL TROPICAL WEATHER OUTLOOK FOR NORTH INDIAN OCEAN (THE BAY OF BENGAL AND ARABIAN SEA) VALID FOR NEXT 120 HOURS ISSUED AT 0600 UTC OF 23.03.2022 BASED ON 0300 UTC OF 23.03.2022.**

**SUBJECT: DEPRESSION WEAKENED INTO A WELL MARKED LOW PRESSURE AREA OVER MYANMAR**

THE DEPRESSION OVER MYANMAR CONTINUED TO MOVE NEARLY NORTH-NORTHEASTWARDS AND **WEAKENED INTO A WELL MARKED LOW PRESSURE AREA** AT 0300 UTC OF TODAY, THE 23RD MARCH, OVER THE SAME REGION. IT WOULD CONTINUE TO MOVE NEARLY NORTH-NORTHEASTWARDS AND WEAKEN FURTHER.

SCATTERED LOW AND MEDIUM CLOUDS WITH EMBEDDED MODERATE TO INTENSE CONVECTION LAY OVER SOUTHEAST BAY OF BENGAL, ANDAMAN SEA AND ARAKAN COAST.

THIS IS THE LAST BULLETIN IN ASSOCIATION WITH THIS SYSTEM.

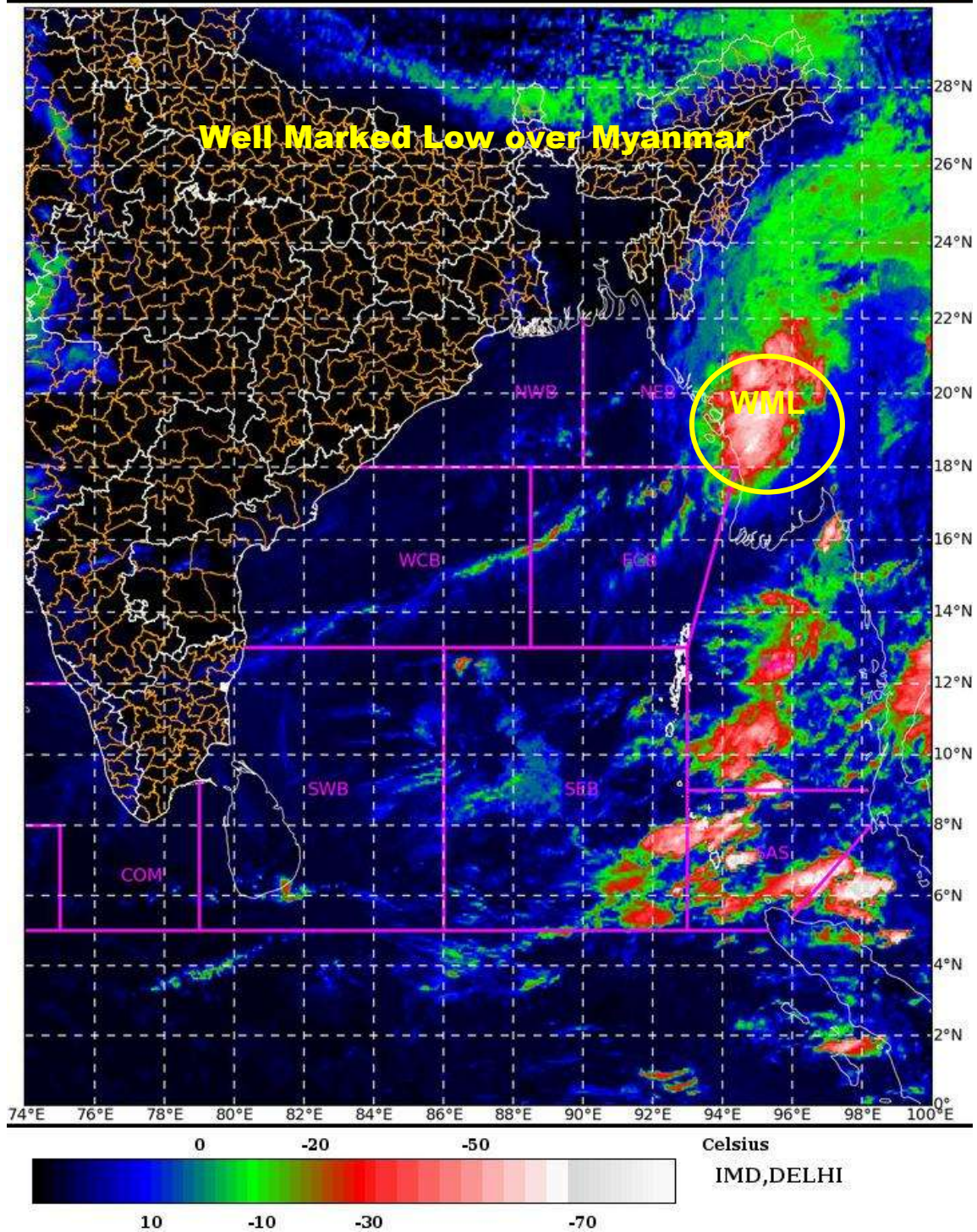
**(M. SHARMA)  
SCIENTIST-D  
RSMC NEW DELHI**

SAT : INSAT-3D IMG 23-03-2022/(0430 to 0457) GMT

IMG\_TIR1\_TEMP 10.8 um 23-03-2022/(1000 to 1027) IST



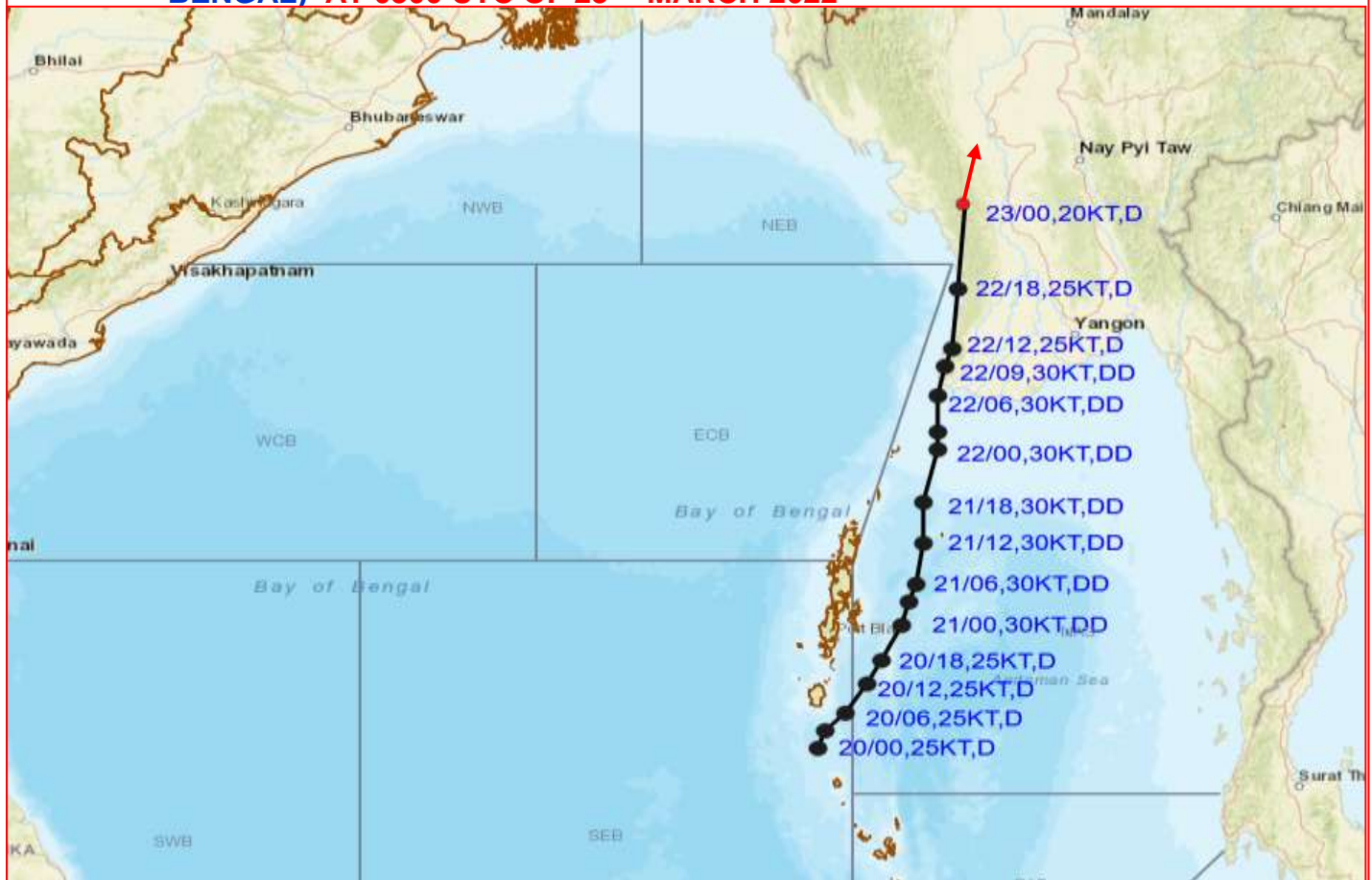
L1C Mercator



**WML: WELL MARKED LOW PRESSURE AREA**



**OBSERVED AND FORECAST TRACK OF WELL MARKED LOW PRESSURE AREA OVER MYANMAR (REMNANT OF DEEP DEPRESSION OVER BAY OF BENGAL) AT 0300 UTC OF 23<sup>RD</sup> MARCH 2022**



DATE/TIME IN UTC  
 IST=UTC + 0530  
 L: LOW PRESSURE AREA  
 WML: WELL MARKED LOW PRESSURE AREA  
 D: DEPRESSION (17-27 KT)  
 DD: DEEP DEPRESSION (28-33 KT)  
 CS: CYCLONIC STORM (34-47 KT)  
 SCS: SEVERE CYCLONIC STORM (48-63KT)  
 VSCS: VERY SEVERE CYCLONIC STORM (64-89 KT)  
 ESCS: EXTREMELY SEVERE CYCLONIC STORM (90-119 KT)  
 SuCS: SUPER CYCLONIC STORM ( $\geq 120$  KT)

- LESS THAN 34 KT
- 34-47 KT
- $\geq 48$  KT
- OBSERVED TRACK
- FORECAST TRACK
- CONE OF UNCERTAINTY